



BIG SKY EARLY SEASON MASTERS RACE CAMP

Presented by



NOVEMBER 21-25, 2020 AT BIG SKY, MONTANA

WHAT YOU GET:

- Top-level coaching to jump start your ski season
- GS training: Free-skiing drills, gate training, line drills in gates
- Slalom training: Free-skiing drills, progression through brushes, stubbies and gates
- Daily video analysis
- Daily door prizes
- 6 nights lodging at the Huntley Lodge
- 3 meals/day
- 5 days lift tickets
- Apres-ski programs
- Awesome camp shirt
- Maximum participants: 24
- Maximum coach-athlete ration: 1:8
- Camp proceeds support BSSEF's junior race program. Thank you!

COACHING STAFF:



Lisa Ballard, Camp Director: Founder/director numerous ski and race camps; 2020 FIS Masters SG and Age 55-59 champion; 6X US Masters Skier-of-the-Year; 100+ US alpine masters titles (DH, SG, GS, SL); 2020 Canadian Masters Grand Champion, 30 years coaching experience; Former US Ski Team Member; Former ski analyst for ESPN and other networks; Author, *Ski Faster! Guide to Racing & High Performance Skiing*.



Jack Ballard: Coach, BSSEF Master's Program; Coach, Silver Run Masters Program at Red Lodge Mountain; US Ski and Snowboard certified coach; PSIA-certified instructor; Chair, Northern Division Masters; Member, US Ski and Snowboard Masters Committee; 10 years on the masters circuit, including national and international competition; 3rd place, 2018 National Speed Series, Class 7. Former college instructor, graduate and undergraduate courses in human learning.



Brenna Kelleher: Montana State University ski team; PSIA National Team, 2016-2020. PSIA Level III ski instructor, Big Sky. Coach, Keely's Camps; World Champion whitewater kayaker (2001).

SCHEDULE:

Friday, Nov 20 (evening): Check-in, 6:00-8:00pm, with refreshments available.

Saturday, Nov 21: Free-skiing drills on slalom skis (morning); slalom drills in brushes, stubbies (afternoon). Apres-ski presentation: Trends in race gear for masters.

Sunday, Nov 22: Slalom training in stubbies, full gates (morning). Free-skiing drills on slalom skis (afternoon). Apres-ski presentation: Applying the World Cup to masters racing.

Monday, Nov 23: Slalom training in stubbies, full gates (morning). Free-skiing drills on GS skis (afternoon). Apres-ski presentation: Mastering the mental side of ski racing.

Tuesday, Nov 24: GS training, line drills (morning). Free-skiing drills on GS skis (afternoon). Free evening.

Wednesday, Nov 25: GS training (morning). Free-skiing drills on GS skis (afternoon).

COST:

Early Bird Registration before October 20, 2020:

Full camp*, single occupancy: \$1,895*

Full camp*, double occupancy: \$1,650*

Season's passholder** with lodging/meals, single occupancy: \$1,605

Season's passholder** with lodging/meals, double occupancy: \$1,370

Season's passholder**, NO lodging: \$1,080

Non-season's passholder, NO lodging: \$1,345

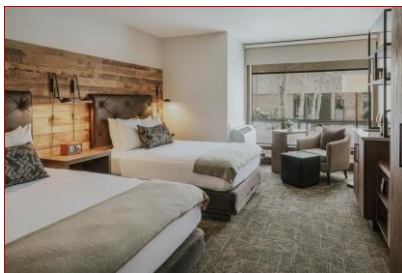
After October 20, 2020: Add 10%

Can only come to part of the camp? We'll prorate your camp fee based on the days you can attend.

**Full camp includes 6 nights lodging, 3 meals/day, 5 days lift tickets, lane fees, coaching, receptions, door prizes, apres-ski presentation, video, etc. It does NOT include transportation to/from Big Sky Resort.*

***Season's passholder rates area apply to Big Sky's Gold, Black and Double Black passes, and IKON pass.*

LODGING:



Huntley Lodge: Newly renovated, at the base of the ski slopes.

<https://bigskyresort.com/accommodations/hotels/huntley-lodge>

MEALS:

All meals will be served in Vista Hall (day lodge at base of ski lifts and training hills). Meals are included with all camp packages, including those that do not include lodging. Note: No restaurants at the resort will be open during the camp, as the camp takes place before the resort is open to the public for the ski season.

NEED A RACE HELMET OR GOGGLES?

Get 20% off Bliz helmets and eyewear from the U.S. Distributor at: <https://enjoywinter.com/>
Use code: **Ballard2020**

MORE INFO:

Lisa Ballard, Camp Director, T. 406-690-0190, lisaballardoutdoors@gmail.com

Jeremy Ueland, BSSEF Program Director, T. 406-579-7005, bigskysef@yahoo.com

Sign up at: <https://bssef.com/>

